

<b>Description of product</b>	2-component waterborne dispersion-paint. Suitable for pneumatic spray application of decorative surficial paint jobs on asphalt and concrete.	
<b>Area of application</b>	Suitable for the application of pedestrian crossings, parking lots, bicycle lanes, playgrounds. Marking must have hardened completely before the area is reopened for traffic.	
<b>Technical characteristics</b>		
Binding agent:	Next generation hybrid binder, combining fast drying of conventional acrylic emulsion with long-term stability through epoxy crosslinking technology.	
Colour:	Various colours available, more colour-tones on request	
	<b>RAL-Code</b>	<b>Color tone</b>
		<b>White</b>
	<b>1023</b>	<b>Traffic Yellow</b>
	<b>2009</b>	<b>Traffic Orange</b>
	<b>3020</b>	<b>Traffic Red</b>
	<b>4006</b>	<b>Traffic Purple</b>
	<b>5017</b>	<b>Traffic Blue</b>
	<b>6024</b>	<b>Traffic Green</b>
	<b>7042</b>	<b>Traffic Grey A</b>
	<b>7043</b>	<b>Traffic Grey B</b>
	<b>9017</b>	<b>Traffic Black</b>
	<b>6018</b>	<b>Yellow Green</b>
Pigmentation:	Weather-proof organic and inorganic pigments	
Volume dry:	68.6 %	
Density:	1.56 ± 0.04 kg/l	
VOC-content:	1.5 % (25.1 g/l) (according to guideline 2010/75/EU)	
Additional information:	Free from toxic heavy metals or their compositions. Free from aromatic hydrocarbons. Additional information regarding current legal regulations and information regarding workers health and safety are listed in the Material Safety Data Sheet. Also instructions about transport, handling and storage, disposal and advices regarding first aid, toxicology and ecology are given. The Material Safety Data Sheet has to be read and understood before commencing work.	
<b>Application properties</b>		
Application process:	<p><b>AquaRoute™ Deco Rough Component A</b> (metal bucket, 25.0 Kg net) must be stirred until homogeneous, using a mechanical stirrer. <b>AquaRoute™ Deco Rough Component B</b> (plastic can 1.25 Kg net) is slowly added under stirring, resulting a mixing ratio of 20 to 1. The mixture is stirred 1 minute. Afterwards the mixture can be treated like a conventional waterborne paint within its pot life of 24 hours.</p> <p><b>Warning: no visible end of pot life! After mixing component A &amp; B, material has to be consumed within 24 h, otherwise film formation will fail.</b></p> <p>The application can be made with conventional pneumatic spray application machines or manually with rolls / brushes.</p> <p>The product may not be used for any purpose other than the intended purpose without the consent of the manufacturer. When used in a different way or when applied on special surfaces, please contact the manufacturer before.</p>	
Air temperature:	> + 15 °C	
Surface temperature:	+ 15 °C to + 50 °C. Please be aware that the surface temperature must not drop below 10 °C for up to 1 week after application. Otherwise, the result may be reduced durability of the material.	
Max. relative humidity:	85 % H <sub>rel</sub>	
Pass-over time:	Painted areas can be passed-over after 60 min. <i>(Relative air humidity 60 % and temperature 20 °C. Higher temperatures may reduce the pass-over time. Lower temperatures will increase pass-over time significantly!)</i>	
Rain safety:	Approx. 30 min after the pass-over time has been reached. In the case of thick paint films applied and high air humidity (> 75 % H <sub>rel</sub> ), the time until rain safety is reached can be increased significantly.	

**Surface preparation:** Before application, the surface shall be dry, clean, free of dust and loose particles, salt and grease or oil. Surface must be adhesive. Old markings must be checked before over marking.

*Asphalt*  
 New bituminous surfaces should be weathered 4 - 8 weeks before final application. Aged asphalt or any asphalt poor in bitumen has to be prepared with **GEVEKO Sealer** (≈ 0.2 kg/m<sup>2</sup>). It's not recommended to apply this product on asphalt showing large stones (bigger than 2 cm).

*Concrete*  
 Fresh concrete surfaces containing a paraffin layer must be mechanically pre-treated by grinding or shot blasting. Any cement residue must be removed before application. All concrete surfaces must be prepared with **GEVEKO Sealer** (0.2 kg/m<sup>2</sup>). Also, check technical datasheets of **GEVEKO Sealer**.

*Polished surfaces*  
 When coating on smooth surfaces (polished stone, granite, basalt, tile, glazed tiles, etc.) and surface-treated concrete may cause reduced adhesion. In these substrates, we recommend to apply test markings check for proper adhesion after 14 days.

***The manufacturer will not be liable for failures of adhesion on any polished surface.***

**Thinning:** Low temperatures lead to high spray viscosity. Furthermore viscosity might increase along pot life. Up to 1.5% pure water can be used for thinning. Thinning is also recommended if a manual application (roll, brush) is done on hot surfaces.

***Do not use any organic solvents for thinning, because they will destroy the water borne binding agent irreversibly! If a skin of paint has occurred, do not try to dissolve or to stir it in, because it is no more water soluble. The skin of paint has to be removed completely to avoid blocking of filter and nozzle.***

**Cleaning:** Use water to clean tools and equipment.

**Consumption:** Min.: 1.1 kg/m<sup>2</sup> (wet film ≈ 0.7 mm)  
 Max.: 1.5 kg/m<sup>2</sup> (wet film ≈ 1.0 mm)

Consumption is influenced by porosity, structure and texture depth of substrate. Minimum consumption on a substrate with a texture depth of up to 1 mm is 1.1 kg/m<sup>2</sup>. Facing a texture depth of 2 mm, minimum consumption is increased to 1.5 kg/m<sup>2</sup>. At 3 mm of depth, two layers of product need to be applied. First layer must dry for at least 5 h before over marking. For application on coarser undergrounds this product is not suitable. Maximum applied amount per layer is 1.5 kg/m<sup>2</sup>. If this value is exceeded or material piles up in shallows of the substrate material will not dry properly. For thick applications and coarse substrates please use our 100% systems **PlastiRoute™ Rollplast** or **PlastiRoute™ Rollgrip** instead.

***For all manual application it's important to take care about uniform spreading of material! Special care is also required for sufficient coverage of any elevation in the substrate (such as stones in asphalt).***

Depth of substrates texture [mm]	Applied thickness [mm]	Consumption [kg/m <sup>2</sup> ]	Yield [m <sup>2</sup> /tin]
1	≈ 0.7	1.1	20
2	≈ 1.0	1.5	17
3	2 x 0.7	2 x 1.1 = 2.2	20 / 2 = 10
>3	This material is not recommended. If possible, please use our 100% systems <b>PlastiRoute™ Rollplast</b> or <b>PlastiRoute™ Rollgrip</b> .		

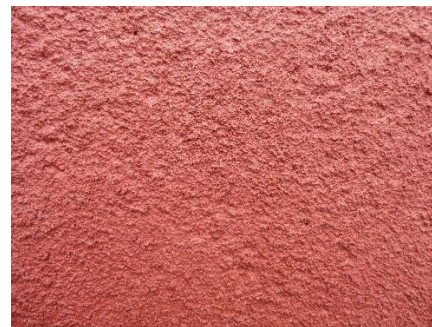
- Storage stability:** 6 months after delivery, when kept in the original packaging under proper storage conditions. Please notice that the material can show a tendency towards sedimentation during transport and storage. After having been stirred-up homogeneously, the material will be ready for use again. Skins of paint have to be removed completely. Never try to stir them up.
- Storage:** Store in tightly closed original containers in a dry, well-ventilated room at temperatures between +5 °C and +30 °C (41 °F – 86 °F), not directly on the floor and not in the vicinity of heating radiators.
- Packaging:** Part A: metal bucket with 25.0 kg net.  
 Part B: plastic can with 1.25 kg net.



Highlighting a pedestrian crossing with red colored **AquaRoute™ Deco Rough**: application on stamped asphalt, combination with white and yellow **PREMARK®**



Designing of a private courtyard: application of **AquaRoute™ Deco Rough** on stamped asphalt (red, grey and light grey area)



Skid-resistant surface structure of **AquaRoute™ Deco Rough**:  
 SRT = 75